



King's  
1502

---

# REACHING OUT

*King's School Outreach and Community Participation 2019*

---







**INDEPENDENT SCHOOL  
PARENTS SAVE THE TAXPAYER**



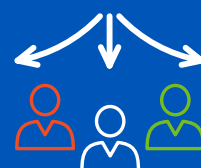
**... AND INDEPENDENT SCHOOLS  
ALSO CONTRIBUTED**

**£3.5  
billion**  
every year



**£11.6  
billion**  
to the UK Economy in 2017

**AND SUPPORTED  
257,000  
JOBS**



# OUTREACH REPORT 2019 INTRODUCTION



*It is a pleasure to share with you our first Outreach Report, an attempt to summarise the community and outreach work undertaken by pupils, parents and staff at The King's School.*

One of our key aims is to develop courageous and responsible citizens who contribute to society through leadership and service. Our values of compassion and mutual respect are important in a community such as ours that extends well beyond the confines of the school gates. In our endeavour to support parents in raising well-rounded individuals, our pupils are encouraged to volunteer their time, to help others, to contribute to community organisations and get involved in local events.

Our staff and students are involved in a wide range of activities, including supporting charities, teacher training programmes, mentoring students, community outreach with local schools, sharing facilities and supporting children in Ghana and Kenya. Pupils themselves choose the charities they support, often reflecting concern for children in the UK and abroad and a range of health-related causes. We continue to build on long-standing relationships at the same time as making new links, running new events and supporting different causes. It is to our pupils' credit that they embrace the opportunity to help and support others beyond the school community. In addition, our bursary and scholarship schemes provide financial support for able boys and girls whose families are unable to afford school fees.

The independent school sector has a huge impact on the UK economy: independent school parents save the taxpayer £3.5 billion every year by funding the education of

pupils who would otherwise take up a place in the state-funded sector. In addition, independent schools contributed £11.6 billion to the UK economy in 2017 and supported 257,000 jobs. At King's, we provide employment for around 250 staff members, including teachers, cleaners, gardeners, sports coaches, nurses, librarians and laboratory technicians.

We are also a major contributor in the local supply chain. Now, more than ever, we are generating jobs for local people and having a positive effect on the local economy as we complete our £60-million new campus. Skilled labourers, traffic marshalls, administrators and apprentices have all been recruited from the local area, with a further 30% of all the labour force coming from Cheshire and the remainder from the North West. Students from different schools have undertaken work experience on the construction site. Materials for the new campus are sourced and purchased locally where possible, with 15% of all spend in the first 6 months of the build within the Cheshire area, with an approximate value of £850,000.

I hope that you enjoy reading this report. Please do get in touch with your feedback or if there is a project that you would like to explore with King's. We look forward to hearing from you.

**Caroline Johnson**  
Director of External Relations



*"What we do for others says much about who we are. Since our foundation more than 517 years ago, King's has been fully committed to supporting the wider community."*





# Supporting OUR COMMUNITY

## Volunteering

Our annual **Volunteering Fair** involves representatives from around 20 local and national organisations, who come in to school to encourage pupils in Years 10 – 13 to join them as volunteers. We have large numbers of pupils each year volunteering their time for the benefit of local organisations.

This year, pupils have been helping at: the Rossendale Trust, Macclesfield Hospital, Stepping Hill Hospital, Oxfam, Brownies, Friends for Leisure, Crafty Corner, The Argyle Care Home, Waters Green Medical Centre, Park Lane School and Age UK. In addition, pupils undertake volunteering through the National Citizen Service.

## Goldsmith's Award

King's pupils were recognised for their charity, voluntary and environmental work as one of just a handful of schools to qualify for the national final of the Goldsmith's Community Engagement Awards in London. The Goldsmiths' judging panel stated: "We were impressed with the students' understanding of what they had learned from their community engagement activities, how these activities had changed their views on the world around them and their personal stories about how they felt they had changed the lives of others."



**5** STAFF

## Staff Contributions

... undertook marathons, sponsored walks or runs for charity, plus one undertook a Skydive for Age Concern.

**13** members of staff volunteer their time for local charities or community organisations, including theatre groups, Rainbows and Scouts, youth groups and churches.

**6** staff provide coaching and expertise at local sports clubs, including rugby, cricket, cycling, athletics, squash, football and orienteering.

**2**

MEMBERS OF STAFF ARE GOVERNORS AT OTHER SCHOOLS.



## Duke of Edinburgh Awards

King's is an authorising centre for the awards scheme. This year, we had around 250 pupils in Years 10 – 13 engaged in completing either Bronze, Silver or Gold Awards. Every year, our pupils contribute around **14,000 hours of voluntary work** to the local economy. That's the equivalent of one person contributing **7 years of volunteering!**



## Age UK and Dementia care

Sixth Form students use their Wednesday afternoons to volunteer at Age UK in Macclesfield. Ten volunteers are teaching IT skills to the older generations as well as helping in Age UK's dementia club, playing games and providing companionship. Deputy Chief Executive at Age UK, Karen Wilson, said: "It's wonderful to see this intergenerational project working so well. Whether teaching IT skills or providing support in our dementia care unit, the teenagers are an invaluable resource. Our clients love learning from them and listening to them and I think the young people enjoy the experience too, finding out about their lives and experiences."



## Facilities & Lettings

Our Community Access programme seeks to widen access to the School's buildings and resources for local organisations, sports clubs, charities and societies. Our facilities are provided either free of charge or at heavily subsidised rates. Last year, 36 organisations used our facilities for either a single event or a series of lettings, including Cheshire Community Foundation, Cheshire Police, East Cheshire NHS Trust, Macclesfield Pioneering Women and the Samaritans amongst others.



## Inter-generational project

Children from King's Pre-School and Reception classes have brought a ray of sunshine into the lives of residents at the Prestbury Beaumont Care Home. Inspired by the Channel 4 TV series 'Old People's Home for 4-year-olds', pupils have visited the Beaumont regularly throughout the year. David Alderman, Activities Coordinator at the Prestbury Beaumont said: "It's been a truly remarkable experience for everyone. Both the children and our residents have gained so much from this experience. Both generations discuss their families and lives, share books and play games, build jigsaws and enjoy special moments when we sing familiar songs together from across the generations. Often you can see tears in the eyes of residents; they love the experience so much."

**36** local organisations used our facilities last year



# Economic IMPACT

We recognise the economic impact of King's activities in the local and national economies, as well as the impact of our new £60-million campus being constructed.

## Employment

King's directly employs **250** people, including teachers, librarians, cleaners, gardeners, sports coaches, IT engineers, data analysts, nurses, librarians and laboratory technicians. The School spent **£6.9m** on wages and salaries in 2018-19, plus it contributed over half a million pounds in national insurance contributions and **£800,000** in pension contributions. The School supports a further **40** indirect jobs in our UK-based supply chain.



## National GDP

Our School's total contribution to the UK's Gross Domestic Product (GDP) is **£20.3 million**. This is made up of direct GDP, indirect GDP in our supply chain and the spending of our staff and suppliers.



## Local Impact

Our School's total contribution to the GDP of Cheshire East local authority district is **£11.8 million**.



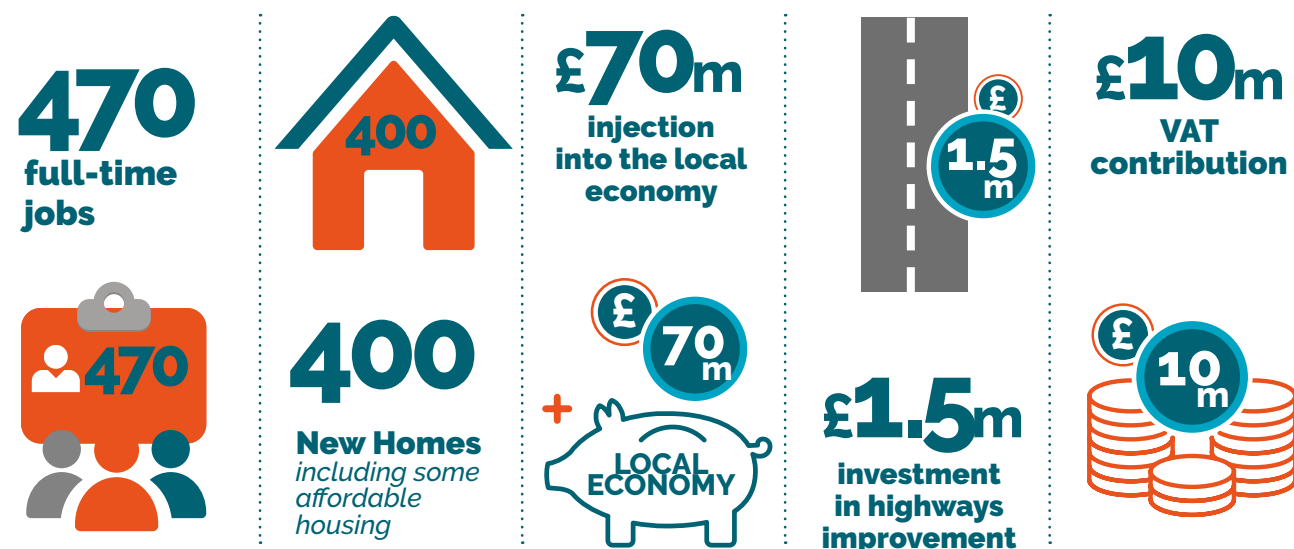
## Tax

This School saves the UK taxpayer **£6.9 million** as a result of attendance at our School. In addition, the total amount of UK tax supported by King's activities is **£5.7 million**.



## REDEVELOPMENT OF KING'S

The construction of our new £60m campus and redevelopment of our existing sites will create:



## Our NEW CAMPUS IMPACT

We recognise the strategic importance of the new campus development as a local asset and the impact it will have on the wider community. The School has worked closely with VINCI Construction UK to maximise the social, economic and environmental benefits of our activities.

Over the lifecycle of the construction project, VINCI has set targets for achieving:



## Waste reduction

VINCI has established targets for carbon reduction, waste reduction and recycling. **100%** of all waste from the site is recycled and therefore diverted from landfill.





# Supporting CHARITY

In 2018/19, pupils and staff raised a staggering £33,000 for charities.



Pupils raised **£5,000** for charities that relieve poverty and **£28,000** for charities that improve health, in particular East Cheshire Hospice, The Christie, Hand on Heart, MIND and Headway. Pupils also generously donated items such as gift boxes, Easter Eggs, filled shoe boxes, selection boxes and clothing to support initiatives for homeless people (Shoe Box Appeal), Francis House Children's Hospice (Easter Eggs), Silk FM Easter Egg Appeal and an orphanage.



## Children in Need

Each year, our pupils support the Children in Need appeal with a non-uniform day and a cake sale. This year, the pupils raised over **£1,000**, with the money being distributed to the Children in Need charity and the Anti-Bullying Alliance.



## Global Links

This year our pupils supported Double Joy Orphanage in Kenya. Our pupils donated clothing, trainers, shoes, games and plastic milk bottle tops (to make toys). The orphanage supports children who have lost parents to AIDS/HIV. The donations were distributed in the summer, resulting in much joy and jubilation from the children.



## Supporting schools in Ghana

At the end of the academic year, we held a shoe collection for children in rural Ghana. Our pupils donated their school shoes on the last day of term, and over 300 pairs of shoes were collected and shipped to Ghana via the charity CKEF (Connecting Kids Education Foundation), with whom we have worked for 5 years.

The shoes make a significance difference to the lives of children in Ghana, who typically go to school in bare feet. We have previously donated furniture, books, shoes, a projector and one of our students has spent a gap year helping to build a school.



## Destiny Garden School, Kenya

For many years, our Junior School has had formal links with Destiny Garden School in Kenya and our pupils have undertaken regular fundraising activities on their behalf. This year, King's Juniors raised over **£2,120** from Christmas-related activities including the retiring collection at St Paul's Church Carol service and Easter service.

## Hospice help

300 Infant & Junior pupils had great fun participating in the 'Snowman Sprint', which, through the generosity of parents, family and friends, generated **£3,103** for East Cheshire Hospice in Macclesfield.



## Comic Relief

Around **£1,000** was raised for Comic Relief this year, with the children invited to wear a red accessory to school. A cake sale and fundraising stalls were held on the day, with the 'sponge the teacher' stand proving to be very popular!



£1,000

## Fashion Show

Our Sixth Form students raised a staggering **£7,000** for The Christie with their annual Fashion Show. Students worked with local shops and fashion outlets to stage the extravaganza. The School is now acknowledged on the donor wall at The Christie.



## Hand on Heart

Following the cardiac arrest of a pupil whilst on holiday, our school community put its weight behind an appeal by his parents to fund a defibrillator for every primary school in the Macclesfield area. In total, the school raised **£8,800** for the Hand on Heart appeal, enough to buy a defibrillator for 8 primary schools. Activities included bake sales, Santa sleigh rides, a disco, sponsored runs and one pupil who raised £1,000 by climbing Mt. Snowden.



£8,800

£4,030

## Mental Health charities

Pupil Rory McCabe raised **£4,030** for Young Minds UK, the UK's leading youth mental health charity. Rory enlisted the help of 16 fellow pupils to undertake a 'Million Metre Challenge', which saw each of them run 100km in the month of April.



# Supporting THE ENVIRONMENT



## Recyclable packaging

Each year, we distribute more than **10,000** copies of newsletters and magazines to pupils, parents and alumni. This year, we are delighted to have been able to switch from a polywrap to a biodegradable alternative, saving a huge volume of single-use plastic going to landfill. We also recycle all of our print cartridges, donating them to raise vital funds for charity.



## RSPB Bird Watch

Each year, our Junior pupils participate in the RSPB Big Bird Watch. RSPB representatives come into school to help pupils take part in the national scheme. Pupils in Years 3 and 4 walk over to Victoria Park and record bird life they see. Pupils in Years 5 and 6 undertake a bird watch in the school meadow, documenting the wide variety of birds on the school site. This year's highlight was seeing a Kingfisher, a King's first!



## Summer Eco Challenge

All **700** Senior pupils took part in a Summer Eco-Challenge, as part of our aim to educate and support our pupils in becoming ecologically responsible citizens of the future. The challenge endeavours to address a variety of local and global issues, and promote the protection of our planet by encouraging pupils to reduce, re-use, recycle and think about their consumer habits.



## Recycling & Diversion from landfill

100% of the School's waste is diverted from landfill, due to a range of recycling and reclamation activities. Cardboard and paper is recycled into new products, the general waste is taken to a Materials Recovery Facility where any recyclables are removed before the residual waste is recovered as Refuse Derived Fuel. Food waste is converted to renewable energy and nutrient-rich bio-fertiliser at an Anaerobic Digestion facility. We are very pleased to have achieved this target for two consecutive years.



**700+**  
new trees to be  
planted at our new  
campus



## Infant & Junior Eco Week

In the summer term, all **300** Infant and Junior pupils spent a week learning about the impact that humans are having on the planet and how to become more responsible global citizens. A number of speakers came in to school to speak to pupils about wildlife conservation, making bug hotels, designing more sustainable buildings and Eco-homes, Fairtrade products, the importance of reducing consumption and recycling and how to live more sustainably.



## Bee-happy!

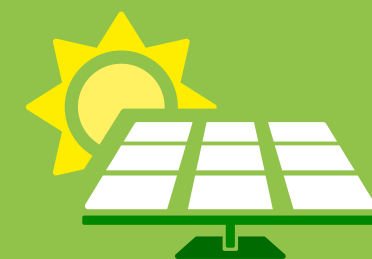
At our new campus, we have plans for **2** orchards – one which will feature Heritage Cheshire apple varieties – and bee hives to teach pupils basic bee-keeping skills and the vital role of bees within our eco-system.



**2** orchards & bee hives

## Macclesfield Garden Festival

This biennial celebration of garden, green spaces and all things ecological is organised by former pupil Jon Tilly. Each year, King's along with other local schools, participates in the festival. Contributions this year included a giant 'Plastic Planet' created by our A Level Art students, which went on show in the centre of the festival, as well as a group of Senior pupils who helped stage an Eco Fashion Show, making outfits out of recycled items and talking about the global impact of the fashion industry.



Solar panels will  
generate enough  
power for



**1,230**  
LED lights

## Eco-friendly campus

Our new campus will be incredibly energy-efficient: the latest insulation in the walls, floors, windows and roof will reduce energy consumption; sensors will turn off lights when rooms are not in use or when there is sufficient daylight to illuminate a room; buildings will use natural ventilation and mechanical heat recovery ventilation (HRV); while solar panels will generate enough power for **1,230** of the new LED lights.





# Supporting SPORT & WELLBEING



## Coaching & Leadership

Many of our staff act as coaches or professional helpers at local sports clubs. These include Matlock Cycling Club, Cheshire Schools Athletics Association, Prestbury Squash Club, Macclesfield Rugby Club, Winnington Park Cricket Club, Alderley Edge Hockey Club, Buxton U12s Football team and the East Midland Orienteering Squad. In addition, 30 Sixth Form pupils participated in the Community Sports Leaders Award Scheme, acting as coaches in local schools and assisting in the running of the Sports Day at Pownall Hall School.



## Sports Camps

Throughout the year, King's sports staff ran a series of sports courses and camps for local children. These included two cricket camps (Easter and May), a Rugby Camp (in conjunction with Sale Sharks) and a Tennis Camp. In addition, Kings Camps ran two-weeks of 'multi-active' sports camps over the summer holidays. In total, these provided training for well over 140 local children.



## Top 100 School for Cricket

King's is one of the UK's best schools for cricket, as nominated by a national sports title, for the fifth consecutive year. *The Cricketer* is the world's best-selling cricket magazine and publishes an annual list of the top 100 secondary schools for cricket provision. Each of the 350 entries was judged against extensive selection criteria including quality of facilities, commitment to cricket in the curriculum and breadth of fixture programmes.



## Sports facilities

The School's sports facilities are let to community groups on 7 days a week: five evenings and both Saturday and Sunday. Our multi-sports facilities benefit a wide range of sports clubs that require high-quality, local provision. Sports clubs and community organisations that benefit from our facilities include: Macclesfield Hockey Club, Bollington Ladies Hockey Club, Bollington FC, Wilmslow Town FC Veterans, Macclesfield Junior Football Club, AFC Prestbury Nomads (Juniors), Park Royal FC (Juniors) and Macclesfield Netball Club.



## Sports Scholarships

This year, King's launched a Sports Scholarship scheme and King's Elite Athlete Programme (KEAP), to offer talented young sports people the opportunity to have subsidised places and access to a programme of support, mentoring and training. A total of five Sports Scholarships and an additional seven places on KEAP were taken up by pupils aged 11 and starting King's Year 7 in September 2019.



## Nurturing local talent

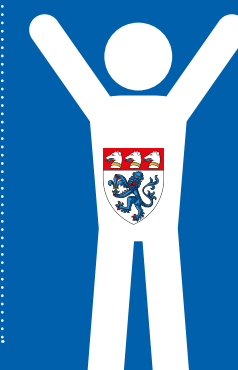
This year, King's sponsored the Cheshire U8s Rugby Festival. A total of 45 teams of under-8s from across Cheshire played rugby at Macclesfield RFC. Our Rugby staff setup an information stand to promote our sports provision and new Elite Athlete Programme. Our Year 10 and 11 players ran rugby skills activities, refereed and presented the awards at the end of the matches.



## Global outreach

In the summer of 2018, our Senior Girls' Hockey and Netball teams undertook a sports tour to South Africa. The pupils spent some time with the Goedgedacht Trust, providing sports coaching for girls from the township and also getting involved in two Path out of Poverty (POP) programmes, which are designed to help the local children reach their full potential and escape poverty. King's girls donated gift boxes, sports equipment and often their trainers too.

In the summer of 2019, as part of a Rugby Tour of South America, our rugby coaches and pupils provided coaching sessions for 35 children living in the favelas in Brazil. Our boys led the coaching and also donated some playing kit, water bottles, first aid kits and coaching equipment.



## World Cheerleading finals

King's pupils were selected to represent the United Kingdom at the World Cheerleading Championships in Florida in 2019. Pupils did the school, and the nation, proud with third place in the world rankings.





# Supporting WIDER EDUCATION

## Teacher Training

King's supports those who are training as teachers in a number of ways. Working with the Manchester Universities, every year we host around 5 trainee teachers and provide each with an experienced mentor, who is trained by the relevant university.

We offer a full programme of Professional Studies for our trainee teachers, which consists of seminars, weekly meetings and twilight sessions. Over the last five years we have supported approximately 25 young teachers entering the profession and we have achieved Advanced

Around **20**  
STAFF  
ACT AS  
EXAMINERS

Partnership School status with Manchester Met University.

Another form of training is offered at King's via in-post routes to qualification, working with the Manchester Metropolitan University and the University of Buckingham. Three colleagues recently achieved QTS (Qualified Teacher Status) via this route and another will start in

## School Governors

Two members of staff act as governors at other local schools, including the Fermain Academy, which is an alternative provision school. A number of staff also act to support local youth groups, Guide, Scout and Rainbow groups and schools' PTA groups.



Each year we host  
**5** TRAINEE  
TEACHERS

In the last 5 years, we have  
supported  
**25**  
Young  
TEACHERS

## Senior Taster Day

In July, we hosted 230 Year 5 children from around 49 different primary and preparatory schools. Pupils had the opportunity to experience life in the senior school through a day of enjoyable lesson and activities including Science and Maths workshops, Games lessons, Spanish, Art, Music and D&T lessons. From the feedback survey, 100% of parents rated the event as Good or Excellent.



## World Challenge

In July 2019, 10 students spent a month in Java undertaking 12 days of volunteer work. This involved six days working at an animal rescue centre for Orangutans and six days working in a coastal village where they helped build a school as well as taught lessons.



## Supporting NQTs

King's is heavily involved with a programme of support for Newly Qualified Teachers (NQTs). We work alongside IsTip (Independent Schools Teacher Induction Panel) to ensure high-quality mentoring of new teachers during their first year in the profession. Over the last five years, we have had an average of three or four NQTs each year. We support our NQTs via a three-day NQT induction course, weekly meetings with IsTip trained Mentors, twilight sessions and partnering with experienced staff.

We are a regional training Centre for the North West region and run three IsTip Regional NQT Conferences each year. These provide around 25 NQTs from all across the North West with workshops, speakers and in-house presentations. In the last five years, we have supported around 125 new teachers in this way.



## Early Years staff training

In June, we provided a training event for local nursery and pre-school staff. Subsidised places were offered to local nurseries and schools, with training provided by 'Speech Leap' on the power of speech, language and communication from birth to school age. Speech Leap specialise in guiding staff in the quest to improve early speech and language teaching, alongside assessing and supporting speech and language difficulties in children.



## Bursaries & financial assistance

Widening access to our School is a key strategic aim. There are currently 70 pupils in receipt of bursary assistance (valued at around £600,000) and over 100 pupils in receipt of a Scholarship Award (valued at around £100,000). In the Sixth Form, we are able to offer external candidates a number of bursary awards, including the School's Quincentenary Bursary Scheme, the Merchant Taylors' Bursary and the Alex Anderson Bursary. Numerous activities take place throughout the year to raise funds for our Bursary Scheme, including an annual Golf Day for alumni and local businesses.



**70** PUPILS  
receive  
bursaries  
worth



**100** PUPILS  
receive  
scholarships  
worth





# Supporting THE ARTS



**100+**  
musicians  
use our  
facilities  
each  
Saturday

## Macclesfield Music Centre

Pupils and adults, aged 6 to 96, from across the locality attend the Macclesfield Music Centre (MMC) which uses the school's facilities each Saturday for rehearsals. MMC is an independent charity offering everyone in the community the opportunity to be taught a musical instrument and to perform together. Each Saturday morning, over **100** people use our facilities including classrooms, the main hall, dining hall and performance spaces.



## Barnaby Festival

The Barnaby Festival is a biennial arts and cultural festival inspired by the town's rich history, heritage and culture. It is organised by the community, powered by volunteers, and funded through donations and sponsorship. For the last few years, we have sponsored the festival, provided a free printing service for literature (posters/leaflets/signage, etc.) and our pupils and staff have contributed to the festival with performances from our choirs, ensembles, as well as science demonstrations, stalls and displays.



## Concerts

Overall, Senior pupils hosted **19** public concerts locally and nationally, including participating in a national Remembrance Service in the Symphony Hall, Birmingham to commemorate the 100th anniversary of the end of WW1. The Choir also performed a fundraising concert for The Priory Church in Cartmel. In addition, our Infant & Junior Division pupils put on **7** public concerts and participated in the Alderley Edge Music Festival.



## Junior Pupils

Each year, our younger pupils pay a number of visits to the residents of Harry Lawson Court for elderly people. At Harvest time they donate harvest baskets that they have created and deliver them to residents, also putting on a performance of harvest songs. At Christmas, again they visit and take with them some seasonal cheer in the form of a performance of Christmas Carols and a poetry recital.



## Sygnets Drama School

Each year, the Cheshire Youth Group for stage talent known as Sygnets, uses our school facilities to run musical theatre courses and drama productions in the school holidays. Local children, teenagers and adults are able to benefit not only from our facilities, but also the expertise of our AV Technician in staging these concerts and shows.



*This year, pupils and staff hosted a public art exhibition at the offices of local law firm Jobling Gowler. This was the second such exhibition, with proceeds from sales donated to the 'Hand on Heart' charity.*



## Music Scholarships, Exhibitions and Organ Scholarships

King's offers a number of Music Scholarships each year in recognition of outstanding potential and musical abilities. These are advertised to local children who are encouraged to apply. Music Scholarships typically offer a discount of up to **10% of school fees** and are awarded by our Director of Music following auditions. In addition to the Music Scholarships, we also offer Music Exhibitions which are valued at £600 per annum to cover the cost of voice/instrumental tuition. We also have an Organ Scholarship available, which again is awarded by the Director of Music following exhibition.



## Music At Mikes

Throughout the year, King's musicians provide regular lunchtime recitals at St Michael's Church in the centre of Macclesfield. Known as 'Music at Mikes', this series of fundraising concerts are open to the public and generate funds for the East Cheshire Hospice.

## Dramatic performances

All pupils have the opportunity to take part in Drama productions. This year, the Senior Divisions performed three different plays which were open to the public over a total of eight evenings, plus a number of smaller performances by GCSE students, the Year 7 Drama Evening and Year Creative Evening. Our Infant & Junior Division put on four dramatic performances.



## Canalside Radio

Canalside Radio is a not-for-profit, volunteer-led organisation running a community radio station and a charity training arm. It is funded by sponsors, donors and some grant funding. The School is one of the radio station's principal sponsors, helping to keep the station going. A number of our Sixth Form pupils participate each year in the training programme, learning how to produce radio programmes. In addition, one of our members of staff acts as a volunteer committee member.





# Supporting LITERACY & LANGUAGE



SPANISH  
GERMAN  
RUSSIAN



## Language Leaders

In 2018, 11 Year 9 pupils undertook the 'Language Leaders' Course to develop their core skills and learn how to teach languages. Pupils undertook teaching in Russian, Polish, Hindi, French, German and Spanish to their peers and to younger pupils in the school.

**44** PUPILS attended our **CREATIVE WRITING WORKSHOP**

## Creative Writing Workshop

Each year, our English Department runs a Creative Writing Workshop for Year 6 pupils in local schools. The workshops help pupils to develop methods such as imagery, pathetic fallacy, advanced punctuation and presentation skills. This year, 44 pupils from two local schools attended for a creative writing and poetry writing workshop.

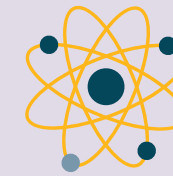


## A Level German Workshop

A level students studying German at schools across the region joined King's School pupils for special a lecture on contemporary German film. The lecture by Edge Hill University's distinguished Professor of Film, Owen Evans, who discussed two seminal German films 'Goodbye to Lenin' and 'The Lives of Others' before asking students to dissect and analyze segments that examine the legacy of the German Democratic Republic, was attended by pupils from Wilmslow High School, Manchester Grammar School and Tytherington High School.



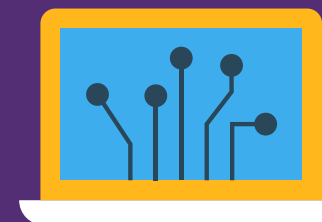
# Supporting STEM



*At King's, we are passionate supporters of STEM subjects (Science, Technology, Engineering and Maths), seeking to make them as accessible and inclusive as possible.*

## Encouraging Women into STEM

This year, we launched a new Computing Club specifically for girls, to encourage our female pupils to become the Computer Scientists of tomorrow in what is typically a male-dominated environment. This is alongside work to encourage our female pupils to attend our Electronics Club. In both our Junior and Senior Girls' Division, a range of speakers have spoken to pupils about their roles and jobs as doctors, engineers, scientists, designers and architects.



## Festival of Chemistry



A group of four pupils competed in the Salter's Festival of Chemistry, run by the University of Manchester. This year's challenge was called 'The Mystery of the Centenary Cup' and students from a range of school's had to use code-cracking and chemistry skills, including a chromatography experiment, to solve a crime and complete a Forensics Report, which was judged by the competition organisers.



## Science Inspiration for Primary Schools

Each year, as part of our outreach programme, we provide Science Workshops for local primary schools. They are run by our Senior School Science teachers and our A-Level students. This year, they visited five schools and provided a total of nine workshops to 340 Year 5 and Year 6 pupils. In addition, our staff ran a stall at a Science Fair at a local state primary school for a further 60 pupils and gave a lecture at Manchester University to around 200 students from 30 different schools.



## Primary Maths Challenge

Each summer, King's holds the Macclesfield Primary Schools Maths Challenge. This year, teams of Year 5 pupils from 13 local state primary schools plus two teams from King's Juniors battled it out in an afternoon of fun maths activities including speed rounds, logic rounds and complex conundrums. A total of 60 pupils participated, with prizes awarded to the top three teams.



---

## Contact us

Further information on all aspects of life at King's can be found on our website: [www.kingsmac.co.uk](http://www.kingsmac.co.uk).

tel: 01625 260000.

email: [mail@kingsmac.co.uk](mailto:mail@kingsmac.co.uk).

## The King's School in Macclesfield

**Infant & Junior and Senior Girls' Division:** Fence Avenue, Macclesfield, Cheshire, SK10 1LS.

**Senior Boys' Division and Sixth Form:** Cumberland Street, Macclesfield, Cheshire, SK10 1DA.

**NEW CAMPUS ADDRESS:** Alderley Road, Prestbury, Cheshire, SK10 4SP.

For updates on our new campus, scan the QR code below, or go to [www.kingsmac.co.uk/new-campus](http://www.kingsmac.co.uk/new-campus).



 [www.facebook.com/kingsinmacc](http://www.facebook.com/kingsinmacc)

 [@kingsmac](https://twitter.com/kingsmac)

Charity No. 1137204

---

